

Preparation

**Part Number: PT746-35170-02**

**Kit Contents**

Item #	Quantity Req'd.	Description
1	1	Ø16 x 7 et13 Alloy Wheel and Tire Assembly

**Hardware Bag Contents**

Item #	Quantity Req'd.	Description
1		
2		
3		

**Additional Items Required For Installation**

Item #	Quantity Req'd.	Description
1	1	Center Cap PT280-35170-02

**Conflicts**

None
------

**General Applicability**

2017 and newer Tacoma TRD PRO
-------------------------------

**Recommended Sequence of Application**

Item #	Accessory
1	16" Alloy Wheel
2	Optional Wheel Locks


**Vehicle Service Parts** (May be required for reassembly)


Item #	Quantity Req'd.	Description
1	0-4 as needed	Valve Stem Fit Kit (if required) Consult EPC or MicroCAT for correct TPMS P/N for corresponding model and year.
2	0 - 4 as needed	TPMS 20 degree (if required) Consult EPC or MicroCAT for correct TPMS P/N for corresponding model and year.


**Recommended Tools**


Personal & Vehicle Protection	Notes
Safety Glasses	
Seat Protection	Blanket
Special Tools	Notes
Foot Brake Application Tool	Snap-on B240A Pedal Jack or equivalent.
Installation Tools	Notes
Lug Nut Wrench	21 mm wrench flat
Torque Wrench	20-150 ft-lbf (27-204 N-m)
Sockets	21 mm Deep Well.
Extension	4-inch (as needed)
Rubber Mallet	
Clean Lint-free Cloth	
Nylon Panel Removal Tool	e.g. Toyota Pry Tool #1 Toyota SST # 00002-06001-01 or equiv.
Wire Brush	Hand held size
Special Chemicals	Notes


**Legend**


 **STOP:** Damage to the vehicle may occur. Do not proceed until process has been complied with.

 **OPERATOR SAFETY:** Use caution to avoid risk of injury.

 **CAUTION:** A process that must be carefully observed in order to reduce the risk of damage to the accessory/vehicle and to ensure a quality installation.

 **TOOLS & EQUIPMENT:** Used in Figures calls out the specific tools and equipment recommended for this process.

 **REVISION MARK:** This mark highlights a change in installation with respect to previous issue.

 **SAFETY TORQUE:** This mark indicates that torque is related to safety.

**Procedure**

Care must be taken when installing this accessory to ensure damage does not occur to the vehicle. The installation of this accessory should follow approved guidelines to ensure a quality installation.

These guidelines can be found in the "Accessory Installation Practices" document.

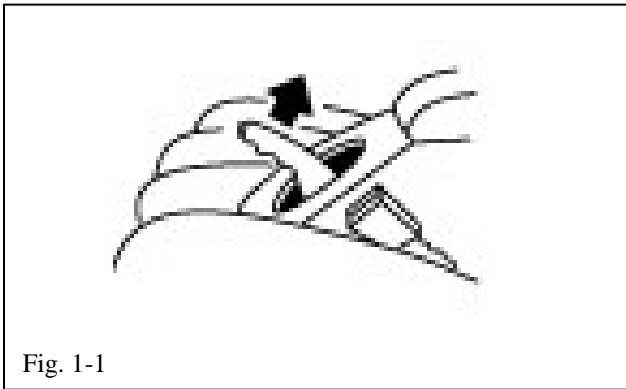
This document covers such items as:-

- Vehicle Protection (use of covers and blankets, cleaning chemicals, etc.).
- Safety (eye protection, rechecking torque procedure, etc.).
- Vehicle Disassembly/Reassembly (panel removal, part storage, etc.).
- Electrical Component Disassembly/Reassembly (battery disconnection, connector removal, etc.).

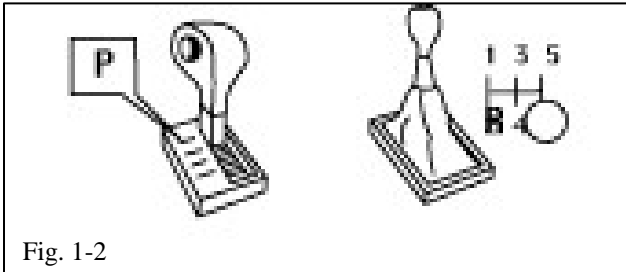
Please see your Toyota dealer for a copy of this document.

**1. Prepare the Vehicle.**

**STOP** (a) Firmly apply the parking brake (Fig. 1-1).



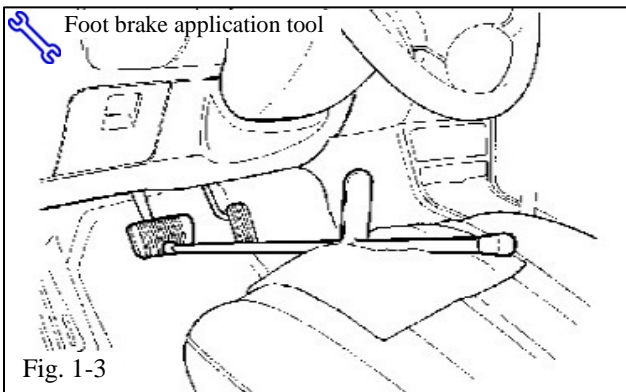
**STOP** (b) Put automatic transmission in "P". Put manual transmission in "R" (Fig. 1-2).

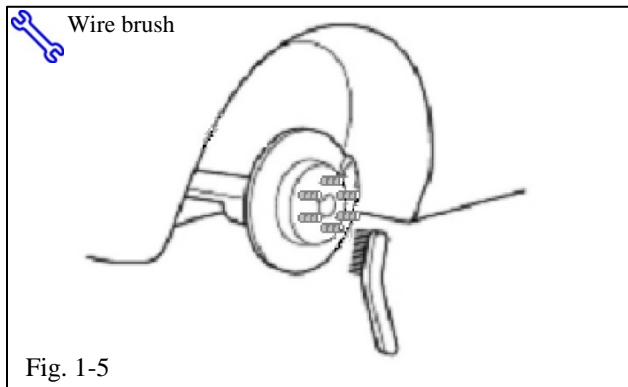
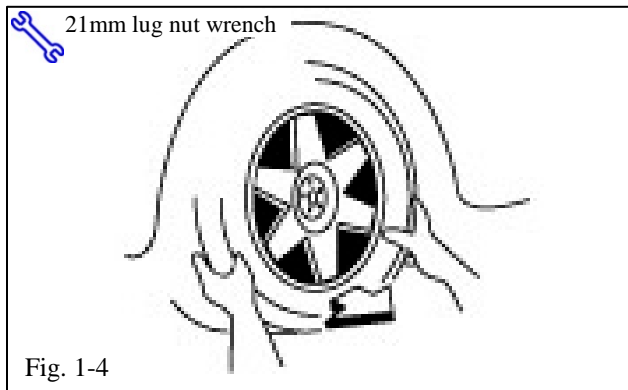





(c) Add seat protection (blanket) and apply the foot brake using a foot brake application tool (Fig. 1-3).

(d) Lift the vehicle.


**STOP CAUTION: Place a safety stand under the front of the vehicle or under the front pinch seam, "jack position," while the vehicle is off the ground for additional vehicle support.**




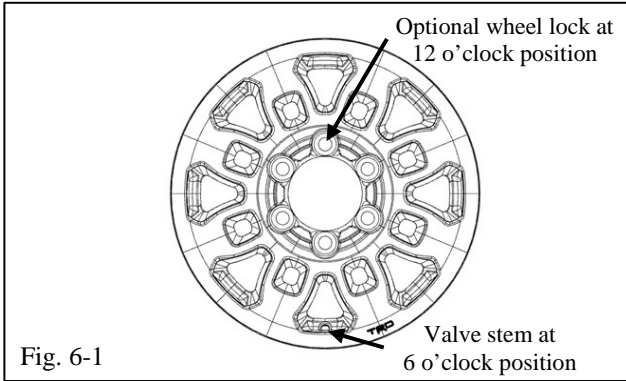


-  (e) Mark the tire installation position on the inward facing tire sidewall i.e. Front Right = FR, Front Left = FL, Rear Right = RR, Rear Left = RL.
-  (f) Remove the OE wheel and tire assembly from the vehicle (Fig. 1-4). Wear safety glasses while removing wheels.
-  (g) If required, remove any corrosion on the mounting surface of the vehicle with a wire brush (Fig. 1-5). Wear safety glasses to protect against any debris.

**2. Install the Wheels / Tires on the Vehicle.**


-  (a) Install the wheel/tire assemblies onto the vehicle in the marked positions (FR, FL, RR, RL). Hand start the lug nuts.

 **NOTE:** If wheel locks are being added, install one wheel lock per wheel at the 12 o'clock position with the valve stem at the 6 o'clock position (Fig. 6-1).



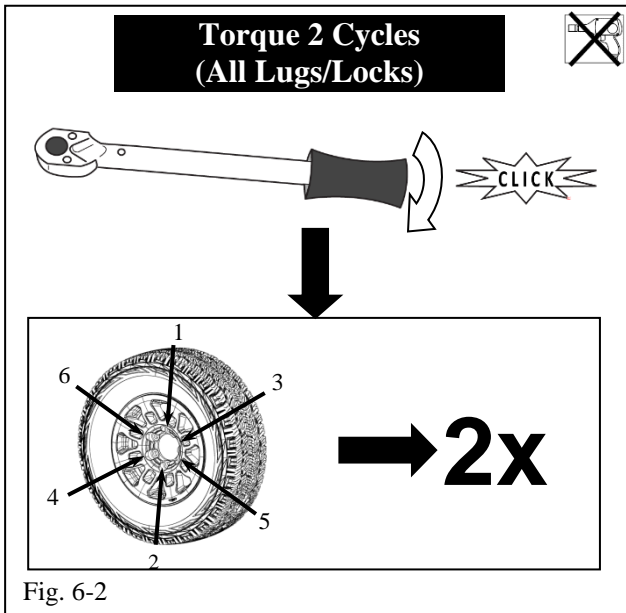
- (b) Tighten the lug nuts in sequence 1 through 6 or equivalent star pattern (Fig. 6-2). Ensure that the socket does not scuff the wheels. Tighten to 83 ft-lbf (112 N-m) using a torque wrench.

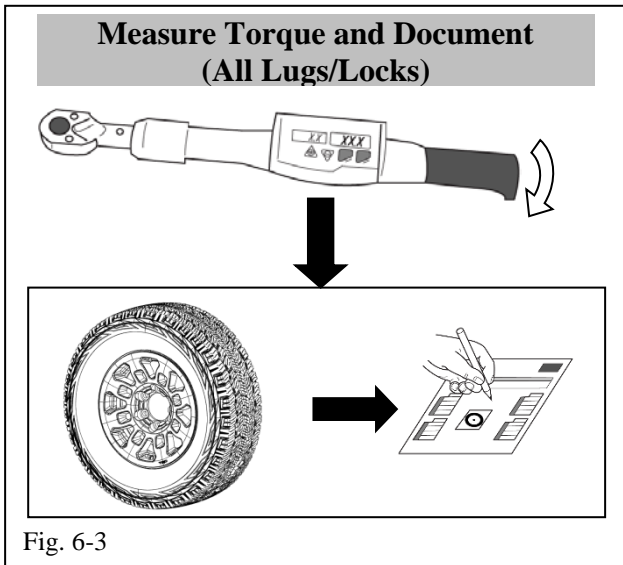
 **Torque: 83 ft-lbf (112 N-m)**

 **CAUTION: DO NOT USE AN IMPACT WRENCH TO INSTALL OR REMOVE WHEEL LOCKS.**

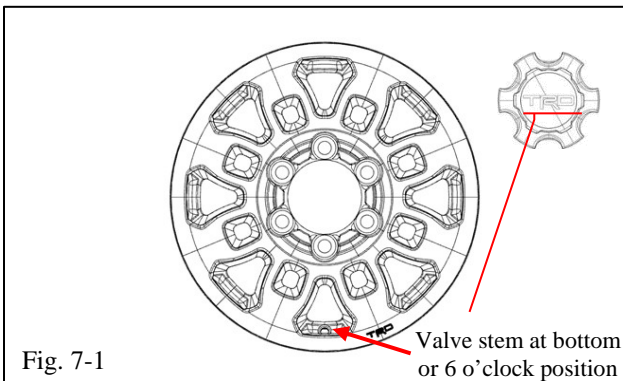
- (c) Re-torque all lug nuts in the same 1-6 sequence (Fig. 6-2).

 **Torque: 83 ft-lbf (112 N-m)**






- (d) With the vehicle still on the lift, use a digital torque wrench to measure the torque of each lug nut/lock, and TPMS nut. Record the values on the Torque Audit Sheet (Fig. 6-3) (PPO installation only, does not apply to DIO installation).
- (e) Lower the vehicle.
- (f) Check tire inflation pressure value recommended in the owner's manual or the B-pillar label located on the driver's side for this vehicle ( $\pm 2$  PSI). Verify during this process only.
- (g) Install the valve stem caps.



### 3. Install the Center Caps.

-  (a) Install the center caps into the wheels. Be sure to orient the TRD logo right side up and level in relationship to the valve stem when it is in the 6 o'clock position. Gently push the center cap into the wheel until the cap snaps into place (Fig. 7-1).

#### 4. TPMS Transmitter ID Registration Using Techstream.

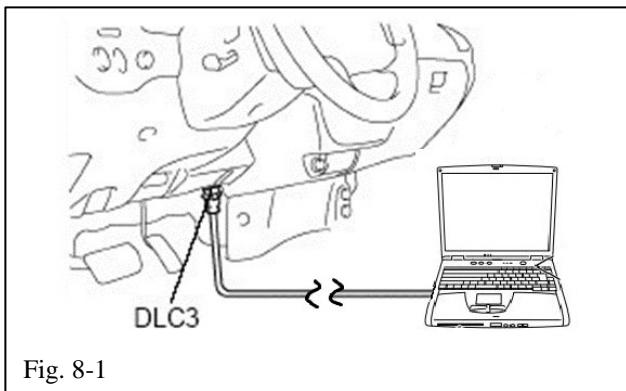


Fig. 8-1

- (a) Connect the Techstream to DLC3 (Fig. 8-1).
- (b) Turn the ignition switch to the ON position (do not start the vehicle) then turn the Techstream ON.
- (c) Start the Techstream application by clicking on the shortcut located on the Desktop.

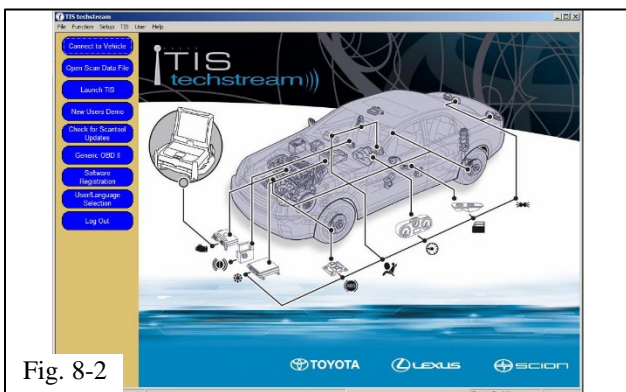


Fig. 8-2

- (d) Click “Connect to Vehicle” button (Fig. 8-2).

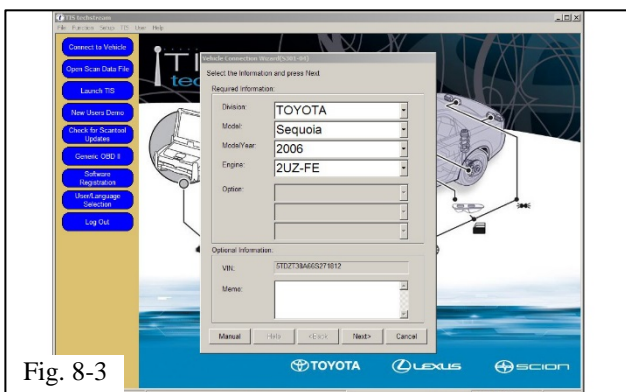


Fig. 8-3

- (e) Confirm that the information displayed on the Vehicle Connection Wizard is correct. If not, make the appropriate selections from the drop down menus, then click “Next” (Fig. 8-3).

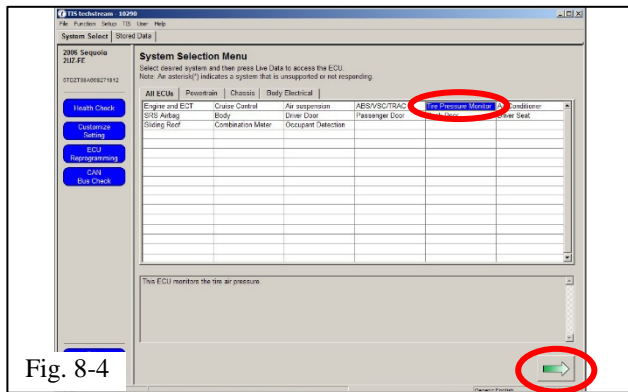


Fig. 8-4

(f) Select “Tire Pressure Monitor” then click the green arrow located on the bottom right (Fig. 8-4).

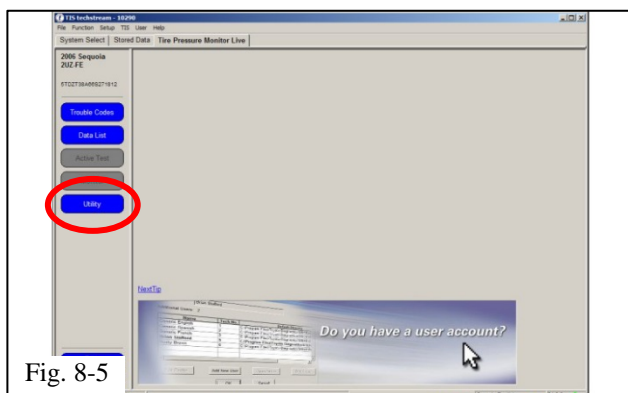


Fig. 8-5

(g) Select “UTILITY” to begin input of new TPMS ID codes (Fig. 8-5).

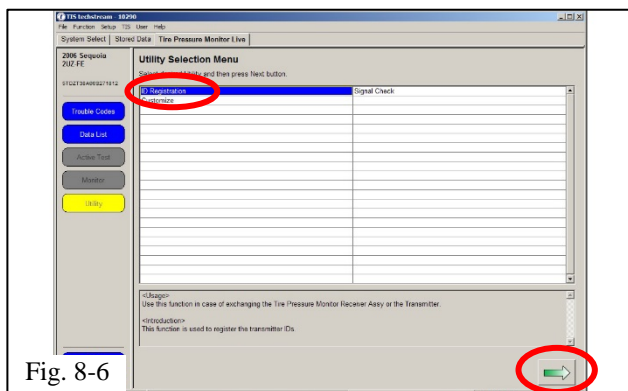


Fig. 8-6

(h) Select “ID Registration” then click the green arrow located at the bottom right corner (Fig. 8-6).

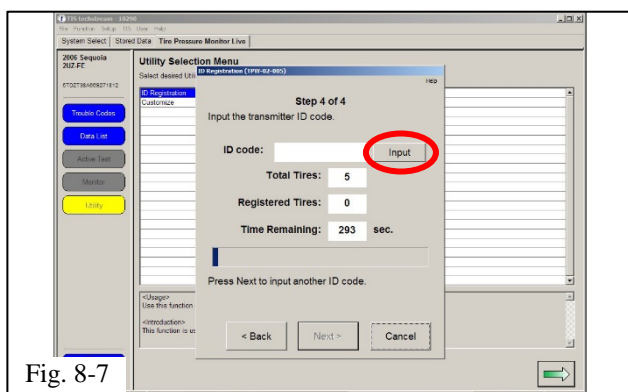


Fig. 8-7

(i) Select “Next” for Steps 1 through 3. Select “Input” in Step 4 to begin TPMS ID registration (Fig. 8-7).

**⚠ NOTE: PPO Only! Read the TPMS ID off the label attached to the tire near the air valve.**



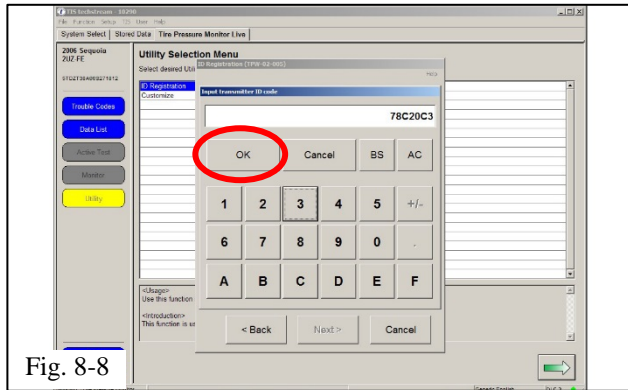


Fig. 8-8

- (j) Input the TPMS ID code then click “OK”  
Repeat the same procedure for all other TPMS ID codes (Fig. 8-8).

**⚠ NOTE:** If this process is not completed within 5 minutes, the transmitter will return to normal operation mode and process will need to be started over at Step 11(g).

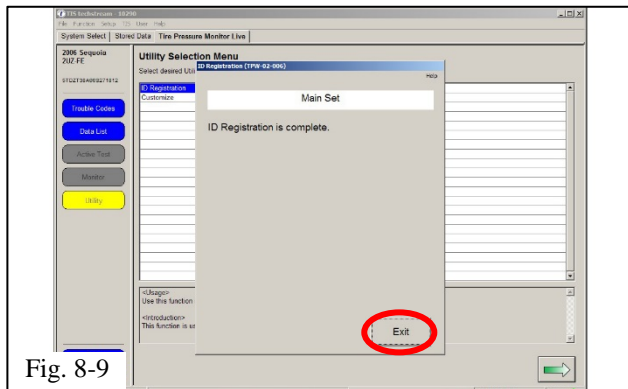


Fig. 8-9

- (k) After all TPMS ID numbers have been registered, “ID Registration is complete” text should be displayed. Click “Exit” to finish the registration process (Fig. 8-9).

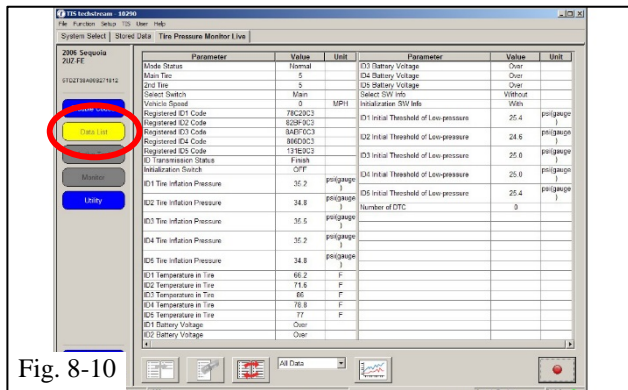


Fig. 8-10

- (l) Select “DATA LIST” to view and confirm the TPMS ID numbers have been correctly registered (Fig. 8-10).



Checklist - these points **MUST** be checked to ensure a quality installation.

Check:

Look For:



- Inspect Lug Nuts & Torque
  
- Record Lug & Lock Torque
  
- Register TPMS sensors
  
- Record TIN
  
- Center Caps
  
- Correct Tire Pressure
  
- Driver Instrument Panel
  
- Optional Wheel Lock Placement

Verify that five lug nuts/locks are installed on each wheel and the optional wheel lock is in the correct position. Torque must be **83 ft-lbf (112 N-m)**.

Measure the torque of each lug/lock on all wheels and record it on the Torque Audit Sheet (PPO installation only, does not apply to DIO installation).

Make sure to register all TPMS sensors to the vehicle using the Techstream tool.

Record Tire ID # (TIN).

Verify center caps are securely in place on all four wheels & oriented correctly.

Verify tire pressure is set to the value specified on the OE Tire Pressure Label.

Verify "TPMS warning light" is not ON.

Verify the Wheel Lock Key is in the appropriate location in the vehicle and the associated paperwork is placed into the vehicle glove compartment.

Vehicle Appearance Check

- After accessory installation and removal of protective cover(s), perform a visual inspection.

Ensure no damage (including scuffs and scratches) was caused during the installation process.  
(For PPO installations, refer to TMS Accessory Quality Shipping Standard.)